

Annual Report 2018

January 18, 2018

Maatram Team celebrated this Pongal festival happily at *St Mary Magdalane Home for the Aged* with elderly people in Savaripalayam, Namakkal.

The team had provided sarees and dhotis for the elderly people living in that home



November 2, 2018

Maatram Educational and Charitable Trust and Shoten- Goju-Ryu academy joined together and conducted 3rd year state level karate* competition which was held on 11.02.2018 in a Govt primary school, salem district. On the occasion of the event Notebooks and school bag were distributed for the students.



August 12, 2018

It was another special day to add memories and remarkable experience by conducting Mega Blood Donation Camp By

Maatram Educational and Charitable Trust.

&

Indian Voluntary Blood Bank

We thank all our donors and Maatram Teammates for conducting this event in a fruitful way. We also happy to inform you that we have organised Food Drive on the same day for abundant elders and children on the streets!

Once again we thank all our donors and supporters! On 12/08/2018



August 11, 2018

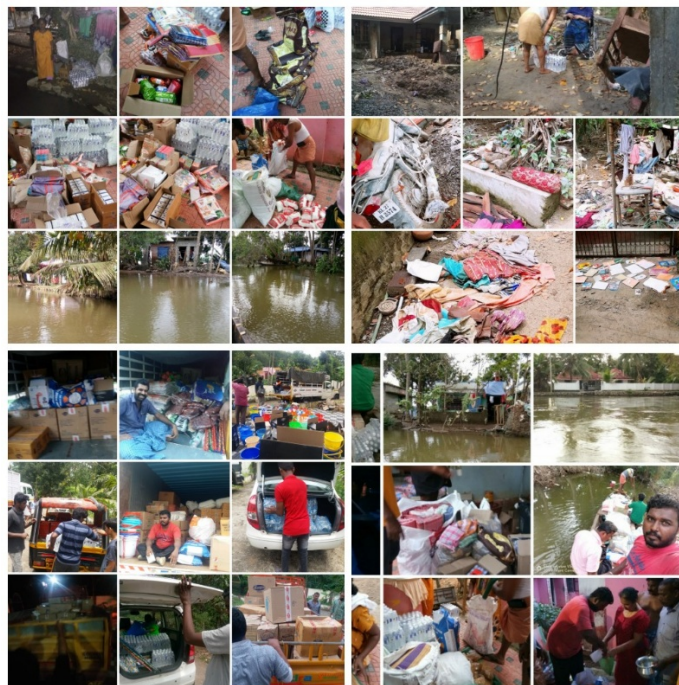
We are happy to render our service for needy. *Mr Kumar* met an accident before 4years and Paralysed. So we received a request on behalf his family for providing wheel chair and he is helpless. We plan to take initiative with the help of *Mr Allwin* and donated wheelchair. Service to humanity is service to God!

Maatram is also supporting his children's Education for past 4years and will continue the same with the Help Your Support!



Kerala Flood Support

Locations we went to support for the Kerala floods areas Chenganoor, Aranmula, Aluva, Ernakulam and Idukki.



Nose Reconstructive Surgery

September 3, 2018

LABORATORY TEST RESULT

Patient Name: Mr. SAHUL HAMEED
Patient ID: BANGA2018
Ref: DR. THAGAKARAN
Ref Date: 01/09/2018
Ref Date: 01/09/2018
Page: 1 of 2

Test Name	Result	Reference Value
HAEMATOLOGY		
SURGICAL PACKAGE		
HAEMOGLOBIN	13.0 gms%	Adult Male: 13 - 17 Adult Female: 12 - 16 Children: 11 - 13.2 Infants: 11 - 20
PCV	39.8 %	Male: 38 - 50 Female: 35 - 46 Child: 35 - 45
TC	8,800 Cells/Cmm	4000 - 10,000
DC		
Neutrophil	45 %	40 - 60
Lymphocyte	24 %	20 - 45
Eosinophil	63 %	1 - 6
Monocyte	81 %	2 - 8
Basophil	88 %	0 - 5

No. 26, 5th Main Road, Thiruvargur, Nangarur, Chennai - 600 061.
Helpline No. 044-22671182 (044-22671077 - Extn. 101) Email: info@bimhospitals.com
Website: www.bimhospitals.com

Affiliated to CMC Vellore for Quality Control (Lab No. 650)
The up with Anderson (Diagnostic & Lab) (NABL Accredited Lab)

WORKING HOURS: 7:00 A.M. - 10:00 P.M. * INCLUDING SUNDAYS



LABORATORY TEST RESULT

Patient Name: Mr. SAHUL HAMEED
Patient ID: BANGA2018
Ref: DR. THAGAKARAN
Ref Date: 01/09/2018
Ref Date: 01/09/2018
Page: 2 of 2

Test Name	Result	Reference Value
BIOCHEMISTRY		
ESR	65 mm	0 - 16
1 hr	11 mm	Male: 17 - 20 mm Female: 15 - 20 mm Children: 17 - 20 mm Infants: 17 - 20 mm
BLEEDING TIME	1 MIN 25 SEC	2 - 7
CLOTTING TIME	4 MIN 15 SEC	4 - 10
BLOOD SUGAR (R)	95 mg/dl	80 - 160

B. M. HOSPITALS

Patient Name: Mr. SAHUL HAMEED
Age / Sex: 16m / Male
Ref No. / Ref: BANGA2018

SPINAL AND GA MEDICINE

Neurological Examination (Spinal)

☒ No. 1: 100%
☒ No. 2: 100%
☒ No. 3: 100%
☒ No. 4: 100%
☒ No. 5: 100%
☒ No. 6: 100%
☒ No. 7: 100%
☒ No. 8: 100%
☒ No. 9: 100%
☒ No. 10: 100%
☒ No. 11: 100%
☒ No. 12: 100%
☒ No. 13: 100%
☒ No. 14: 100%
☒ No. 15: 100%
☒ No. 16: 100%
☒ No. 17: 100%
☒ No. 18: 100%
☒ No. 19: 100%
☒ No. 20: 100%
☒ No. 21: 100%
☒ No. 22: 100%
☒ No. 23: 100%
☒ No. 24: 100%
☒ No. 25: 100%
☒ No. 26: 100%
☒ No. 27: 100%
☒ No. 28: 100%
☒ No. 29: 100%
☒ No. 30: 100%
☒ No. 31: 100%
☒ No. 32: 100%
☒ No. 33: 100%
☒ No. 34: 100%
☒ No. 35: 100%
☒ No. 36: 100%
☒ No. 37: 100%
☒ No. 38: 100%
☒ No. 39: 100%
☒ No. 40: 100%
☒ No. 41: 100%
☒ No. 42: 100%
☒ No. 43: 100%
☒ No. 44: 100%
☒ No. 45: 100%
☒ No. 46: 100%
☒ No. 47: 100%
☒ No. 48: 100%
☒ No. 49: 100%
☒ No. 50: 100%
☒ No. 51: 100%
☒ No. 52: 100%
☒ No. 53: 100%
☒ No. 54: 100%
☒ No. 55: 100%
☒ No. 56: 100%
☒ No. 57: 100%
☒ No. 58: 100%
☒ No. 59: 100%
☒ No. 60: 100%
☒ No. 61: 100%
☒ No. 62: 100%
☒ No. 63: 100%
☒ No. 64: 100%
☒ No. 65: 100%
☒ No. 66: 100%
☒ No. 67: 100%
☒ No. 68: 100%
☒ No. 69: 100%
☒ No. 70: 100%
☒ No. 71: 100%
☒ No. 72: 100%
☒ No. 73: 100%
☒ No. 74: 100%
☒ No. 75: 100%
☒ No. 76: 100%
☒ No. 77: 100%
☒ No. 78: 100%
☒ No. 79: 100%
☒ No. 80: 100%
☒ No. 81: 100%
☒ No. 82: 100%
☒ No. 83: 100%
☒ No. 84: 100%
☒ No. 85: 100%
☒ No. 86: 100%
☒ No. 87: 100%
☒ No. 88: 100%
☒ No. 89: 100%
☒ No. 90: 100%
☒ No. 91: 100%
☒ No. 92: 100%
☒ No. 93: 100%
☒ No. 94: 100%
☒ No. 95: 100%
☒ No. 96: 100%
☒ No. 97: 100%
☒ No. 98: 100%
☒ No. 99: 100%
☒ No. 100: 100%

SPINAL NEEDLE:

☒ 20 size
☒ 22 size
☒ 25 size
☒ 26 size
☒ 28 size
☒ 30 size
☒ 32 size
☒ 34 size
☒ 36 size
☒ 38 size
☒ 40 size
☒ 42 size
☒ 44 size
☒ 46 size
☒ 48 size
☒ 50 size
☒ 52 size
☒ 54 size
☒ 56 size
☒ 58 size
☒ 60 size
☒ 62 size
☒ 64 size
☒ 66 size
☒ 68 size
☒ 70 size
☒ 72 size
☒ 74 size
☒ 76 size
☒ 78 size
☒ 80 size
☒ 82 size
☒ 84 size
☒ 86 size
☒ 88 size
☒ 90 size
☒ 92 size
☒ 94 size
☒ 96 size
☒ 98 size
☒ 100 size

SPINAL TUBE:

☒ 10 size
☒ 12 size
☒ 14 size
☒ 16 size
☒ 18 size
☒ 20 size
☒ 22 size
☒ 24 size
☒ 26 size
☒ 28 size
☒ 30 size
☒ 32 size
☒ 34 size
☒ 36 size
☒ 38 size
☒ 40 size
☒ 42 size
☒ 44 size
☒ 46 size
☒ 48 size
☒ 50 size
☒ 52 size
☒ 54 size
☒ 56 size
☒ 58 size
☒ 60 size
☒ 62 size
☒ 64 size
☒ 66 size
☒ 68 size
☒ 70 size
☒ 72 size
☒ 74 size
☒ 76 size
☒ 78 size
☒ 80 size
☒ 82 size
☒ 84 size
☒ 86 size
☒ 88 size
☒ 90 size
☒ 92 size
☒ 94 size
☒ 96 size
☒ 98 size
☒ 100 size

SPINAL CATHETER:

☒ 10 size
☒ 12 size
☒ 14 size
☒ 16 size
☒ 18 size
☒ 20 size
☒ 22 size
☒ 24 size
☒ 26 size
☒ 28 size
☒ 30 size
☒ 32 size
☒ 34 size
☒ 36 size
☒ 38 size
☒ 40 size
☒ 42 size
☒ 44 size
☒ 46 size
☒ 48 size
☒ 50 size
☒ 52 size
☒ 54 size
☒ 56 size
☒ 58 size
☒ 60 size
☒ 62 size
☒ 64 size
☒ 66 size
☒ 68 size
☒ 70 size
☒ 72 size
☒ 74 size
☒ 76 size
☒ 78 size
☒ 80 size
☒ 82 size
☒ 84 size
☒ 86 size
☒ 88 size
☒ 90 size
☒ 92 size
☒ 94 size
☒ 96 size
☒ 98 size
☒ 100 size

SPINAL NEEDLE:

☒ 20 size
☒ 22 size
☒ 25 size
☒ 26 size
☒ 28 size
☒ 30 size
☒ 32 size
☒ 34 size
☒ 36 size
☒ 38 size
☒ 40 size
☒ 42 size
☒ 44 size
☒ 46 size
☒ 48 size
☒ 50 size
☒ 52 size
☒ 54 size
☒ 56 size
☒ 58 size
☒ 60 size
☒ 62 size
☒ 64 size
☒ 66 size
☒ 68 size
☒ 70 size
☒ 72 size
☒ 74 size
☒ 76 size
☒ 78 size
☒ 80 size
☒ 82 size
☒ 84 size
☒ 86 size
☒ 88 size
☒ 90 size
☒ 92 size
☒ 94 size
☒ 96 size
☒ 98 size
☒ 100 size

SPINAL TUBE:

☒ 10 size
☒ 12 size
☒ 14 size
☒ 16 size
☒ 18 size
☒ 20 size
☒ 22 size
☒ 24 size
☒ 26 size
☒ 28 size
☒ 30 size
☒ 32 size
☒ 34 size
☒ 36 size
☒ 38 size
☒ 40 size
☒ 42 size
☒ 44 size
☒ 46 size
☒ 48 size
☒ 50 size
☒ 52 size
☒ 54 size
☒ 56 size
☒ 58 size
☒ 60 size
☒ 62 size
☒ 64 size
☒ 66 size
☒ 68 size
☒ 70 size
☒ 72 size
☒ 74 size
☒ 76 size
☒ 78 size
☒ 80 size
☒ 82 size
☒ 84 size
☒ 86 size
☒ 88 size
☒ 90 size
☒ 92 size
☒ 94 size
☒ 96 size
☒ 98 size
☒ 100 size

SPINAL CATHETER:

☒ 10 size
☒ 12 size
☒ 14 size
☒ 16 size
☒ 18 size
☒ 20 size
☒ 22 size
☒ 24 size
☒ 26 size
☒ 28 size
☒ 30 size
☒ 32 size
☒ 34 size
☒ 36 size
☒ 38 size
☒ 40 size
☒ 42 size
☒ 44 size
☒ 46 size
☒ 48 size
☒ 50 size
☒ 52 size
☒ 54 size
☒ 56 size
☒ 58 size
☒ 60 size
☒ 62 size
☒ 64 size
☒ 66 size
☒ 68 size
☒ 70 size
☒ 72 size
☒ 74 size
☒ 76 size
☒ 78 size
☒ 80 size
☒ 82 size
☒ 84 size
☒ 86 size
☒ 88 size
☒ 90 size
☒ 92 size
☒ 94 size
☒ 96 size
☒ 98 size
☒ 100 size

SPINAL NEEDLE:

☒ 20 size
☒ 22 size
☒ 25 size
☒ 26 size
☒ 28 size
☒ 30 size
☒ 32 size
☒ 34 size
☒ 36 size
☒ 38 size
☒ 40 size
☒ 42 size
☒ 44 size
☒ 46 size
☒ 48 size
☒ 50 size
☒ 52 size
☒ 54 size
☒ 56 size
☒ 58 size
☒ 60 size
☒ 62 size
☒ 64 size
☒ 66 size
☒ 68 size
☒ 70 size
☒ 72 size
☒ 74 size
☒ 76 size
☒ 78 size
☒ 80 size
☒ 82 size
☒ 84 size
☒ 86 size
☒ 88 size
☒ 90 size
☒ 92 size
☒ 94 size
☒ 96 size
☒ 98 size
☒ 100 size

SPINAL TUBE:

☒ 10 size
☒ 12 size
☒ 14 size
☒ 16 size
☒ 18 size
☒ 20 size
☒ 22 size
☒ 24 size
☒ 26 size
☒ 28 size
☒ 30 size
☒ 32 size
☒ 34 size
☒ 36 size
☒ 38 size
☒ 40 size
☒ 42 size
☒ 44 size
☒ 46 size
☒ 48 size
☒ 50 size
☒ 52 size
☒ 54 size
☒ 56 size
☒ 58 size
☒ 60 size
☒ 62 size
☒ 64 size
☒ 66 size
☒ 68 size
☒ 70 size
☒ 72 size
☒ 74 size
☒ 76 size
☒ 78 size
☒ 80 size
☒ 82 size
☒ 84 size
☒ 86 size
☒ 88 size
☒ 90 size
☒ 92 size
☒ 94 size
☒ 96 size
☒ 98 size
☒ 100 size

SPINAL CATHETER:

☒ 10 size
☒ 12 size
☒ 14 size
☒ 16 size
☒ 18 size
☒ 20 size
☒ 22 size
☒ 24 size
☒ 26 size
☒ 28 size
☒ 30 size
☒ 32 size
☒ 34 size
☒ 36 size
☒ 38 size
☒ 40 size
☒ 42 size
☒ 44 size
☒ 46 size
☒ 48 size
☒ 50 size
☒ 52 size
☒ 54 size
☒ 56 size
☒ 58 size
☒ 60 size
☒ 62 size
☒ 64 size
☒ 66 size
☒ 68 size
☒ 70 size
☒ 72 size
☒ 74 size
☒ 76 size
☒ 78 size
☒ 80 size
☒ 82 size
☒ 84 size
☒ 86 size
☒ 88 size
☒ 90 size
☒ 92 size
☒ 94 size
☒ 96 size
☒ 98 size
☒ 100 size

SPINAL NEEDLE:

☒ 20 size
☒ 22 size
☒ 25 size
☒ 26 size
☒ 28 size
☒ 30 size
☒ 32 size
☒ 34 size
☒ 36 size
☒ 38 size
☒ 40 size
☒ 42 size
☒ 44 size
☒ 46 size
☒ 48 size
☒ 50 size
☒ 52 size
☒ 54 size
☒ 56 size
☒ 58 size
☒ 60 size
☒ 62 size
☒ 64 size
☒ 66 size
☒ 68 size
☒ 70 size
☒ 72 size
☒ 74 size
☒ 76 size
☒ 78 size
☒ 80 size
☒ 82 size
☒ 84 size
☒ 86 size
☒ 88 size
☒ 90 size
☒ 92 size
☒ 94 size
☒ 96 size
☒ 98 size
☒ 100 size

SPINAL TUBE:

☒ 10 size
☒ 12 size
☒ 14 size
☒ 16 size
☒ 18 size
☒ 20 size
☒ 22 size
☒ 24 size
☒ 26 size
☒ 28 size
☒ 30 size
☒ 32 size
☒ 34 size
☒ 36 size
☒ 38 size
☒ 40 size
☒ 42 size
☒ 44 size
☒ 46 size
☒ 48 size
☒ 50 size
☒ 52 size
☒ 54 size
☒ 56 size
☒ 58 size
☒ 60 size
☒ 62 size
☒ 64 size
☒ 66 size
☒ 68 size
☒ 70 size
☒ 72 size
☒ 74 size
☒ 76 size
☒ 78 size
☒ 80 size
☒ 82 size
☒ 84 size
☒ 86 size
☒ 88 size
☒ 90 size
☒ 92 size
☒ 94 size
☒ 96 size
☒ 98 size
☒ 100 size

SPINAL CATHETER:

☒ 10 size
☒ 12 size
☒ 14 size
☒ 16 size
☒ 18 size
☒ 20 size
☒ 22 size
☒ 24 size
☒ 26 size
☒ 28 size
☒ 30 size
☒ 32 size
☒ 34 size
☒ 36 size
☒ 38 size
☒ 40 size
☒ 42 size
☒ 44 size
☒ 46 size
☒ 48 size
☒ 50 size
☒ 52 size
☒ 54 size
☒ 56 size
☒ 58 size
☒ 60 size
☒ 62 size
☒ 64 size
☒ 66 size
☒ 68 size
☒ 70 size
☒ 72 size
☒ 74 size
☒ 76 size
☒ 78 size
☒ 80 size
☒ 82 size
☒ 84 size
☒ 86 size
☒ 88 size
☒ 90 size
☒ 92 size
☒ 94 size
☒ 96 size
☒ 98 size
☒ 100 size

SPINAL NEEDLE:

☒ 20 size
☒ 22 size
☒ 25 size
☒ 26 size
☒ 28 size
☒ 30 size
☒ 32 size
☒ 34 size
☒ 36 size
☒ 38 size
☒ 40 size
☒ 42 size
☒ 44 size
☒ 46 size
☒ 48 size
☒ 50 size
☒ 52 size
☒ 54 size
☒ 56 size
☒ 58 size
☒ 60 size
☒ 62 size
☒ 64 size
☒ 66 size
☒ 68 size
☒ 70 size
☒ 72 size
☒ 74 size
☒ 76 size
☒ 78 size
☒ 80 size
☒ 82 size
☒ 84 size
☒ 86 size
☒ 88 size
☒ 90 size
☒ 92 size
☒ 94 size
☒ 96 size
☒ 98 size
☒ 100 size

SPINAL TUBE:

☒ 10 size
☒ 12 size
☒ 14 size
☒ 16 size
☒ 18 size
☒ 20 size
☒ 22 size
☒ 24 size
☒ 26 size
☒ 28 size
☒ 30 size
☒ 32 size
☒ 34 size
☒ 36 size
☒ 38 size
☒ 40 size
☒ 42 size
☒ 44 size
☒ 46 size
☒ 48 size
☒ 50 size
☒ 52 size
☒ 54 size
☒ 56 size
☒ 58 size
☒ 60 size
☒ 62 size
☒ 64 size
☒ 66 size
☒ 68 size
☒ 70 size
☒ 72 size
☒ 74 size
☒ 76 size
☒ 78 size
☒ 80 size
☒ 82 size
☒ 84 size
☒ 86 size
☒ 88 size
☒ 90 size
☒ 92 size
☒ 94 size
☒ 96 size
☒ 98 size
☒ 100 size

SPINAL CATHETER:

☒ 10 size
☒ 12 size
☒ 14 size
☒ 16 size
☒ 18 size
☒ 20 size
☒ 22 size
☒ 24 size
☒ 26 size
☒ 28 size
☒ 30 size
☒ 32 size
☒ 34 size
☒ 36 size
☒ 38 size
☒ 40 size
☒ 42 size
☒ 44 size
☒ 46 size
☒ 48 size
☒ 50 size
☒ 52 size
☒ 54 size
☒ 56 size
☒ 58 size
☒ 60 size
☒ 62 size
☒ 64 size
☒ 66 size
☒ 68 size
☒ 70 size
☒ 72 size
☒ 74 size
☒ 76 size
☒ 78 size
☒ 80 size
☒ 82 size
☒ 84 size
☒ 86 size
☒ 88 size
☒ 90 size
☒ 92 size
☒ 94 size
☒ 96 size
☒ 98 size
☒ 100 size

SPINAL NEEDLE:

☒

2018 Diwali

Maatram Team & SHOTEN GOJU-RYU KARATE-DO ACADEMY celebrated this Diwali festival at St Mary Magadalane Home for the Aged with elderly people in Savuripalayam, Namakkal.

The team had provided sarees and dhotis for the elderly people living in that home and provided lunch also each one of them were very happy 😊 and thankful to our team



Kolidam Flood Support

September 15, 2018



Maatram Distributed Bedsheets for Blind People's in Thiruninravur.



Gaja Cyclone 2018

Supported relief materials and basic needs for the affected peoples and rebuild 108 hut houses for them and distributed (Goats and Hens and 1500 plants).



